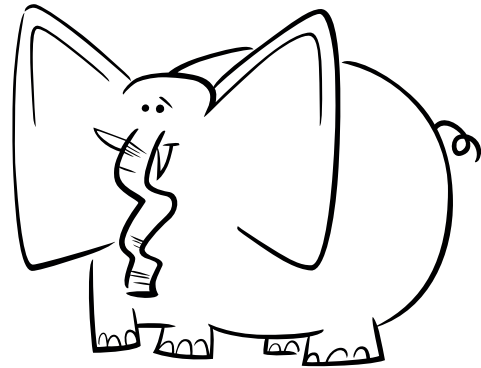
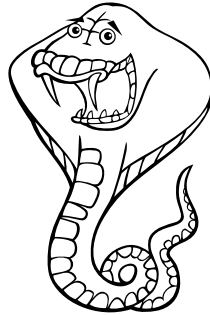
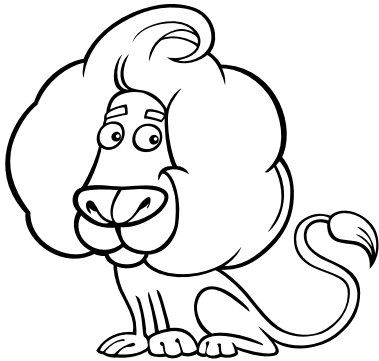


<b>Key Stage 2</b>	Created by InspirEd Workshops - Film & Animation Specialists. Book a workshop to support this lesson plan. <a href="http://www.inspiredworkshops.co.uk/bicschool">www.inspiredworkshops.co.uk/bicschool</a>	
<b>Curriculum Subjects</b>	<b>History</b> <b>Art &amp; Design</b>	
<b>Learning Objectives</b>	Design a coat of arms for a brave knight	
<b>Materials</b>	BICKIDS® KID COULEUR® felt tip pens The attached worksheets	
<b>Teacher Prep</b>		<b>Pupil Prep</b>
Search "Tudor royalty" on the internet and prepare a selection of images that show Tudor dress. You will need two royals, one male and the other female and one peasant. Some good examples are Henry VII, Anne Bolyen and Elizabeth I. Find images that show the full outfit.		None needed
<b>Lesson</b>		
<p><b>Worksheet 1</b> Show the class the images you have prepared and ask them to write down their observations on the worksheet.</p> <p><b>Class discussion</b> Clothing was used as a status symbol depicting wealth and privilege. Rich people's clothing was made from the finest silk, wool and linen. Women's dresses gave them a triangle shape making their waists look thin and slender. Male garments were square which made their chests and shoulders look broad and strong. What are the similarities and differences between male and female dress? What colours were popular? Were the outfits practical? Why did rich people dress this way?</p> <p><b>Worksheet 2 or 3</b> Using BICKIDS® PLASTIDECOR® colouring crayons design a Tudor outfit that is fit for Royalty.</p>		
<b>Learning Outcomes</b>	An understanding of Tudor fashion, it's colours and why people dressed that way. Each pupil will have designed an outfit in a Tudor style.	
<b>Follow on Activities</b>	Paint a picture of the design. Design a modern day Tudor outfit with gadgets and bling.	

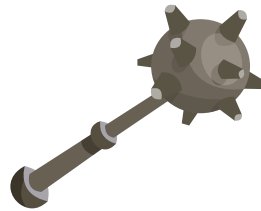
Discover Teachers Corner at: [www.bickids.co.uk](http://www.bickids.co.uk)

**Created by [www.inspiredworkshops.co.uk](http://www.inspiredworkshops.co.uk)**

Choose an animal



Choose a weapon



What colour will you use?

Yellow - Generous

Purple - Royal

Blue - Loyal and truthfull

Red - A strong warrior

White - Wisdom

Green - Hope

Which shield shape do you like?



